



TOWN HALL LOCATED AT **BACK** OF SITE



TOWN HALL LOCATED AT **FRONT** OF SITE





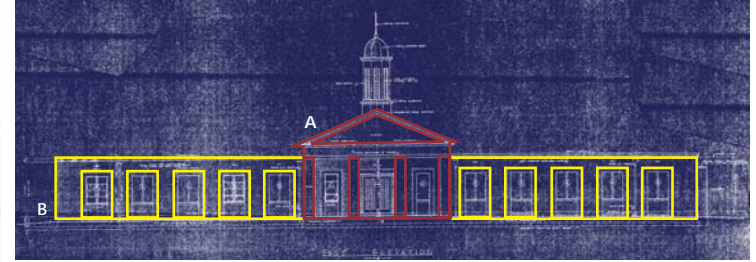
ENTRANCE VIEW



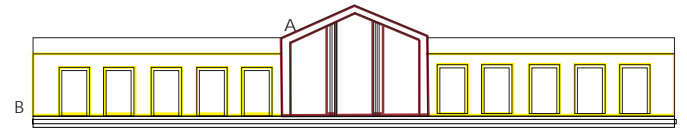
THOMPSON STREET VIEW



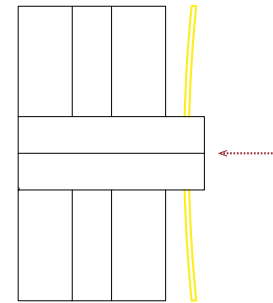
EAST ELEVATION
SCALE : 1/8"=1'



A) Original greek-temple facade
B) Brick facade with ryth of openings



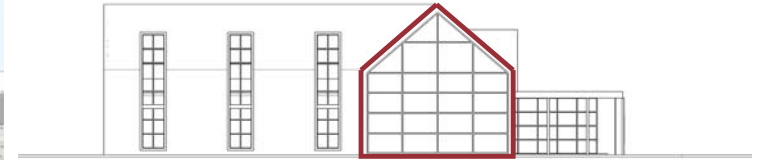
A) Reinterpretation of original greek-temple facade
B) Original facade reinterpreted as brick colonnade



Colonnade wall forms public plaza with entry



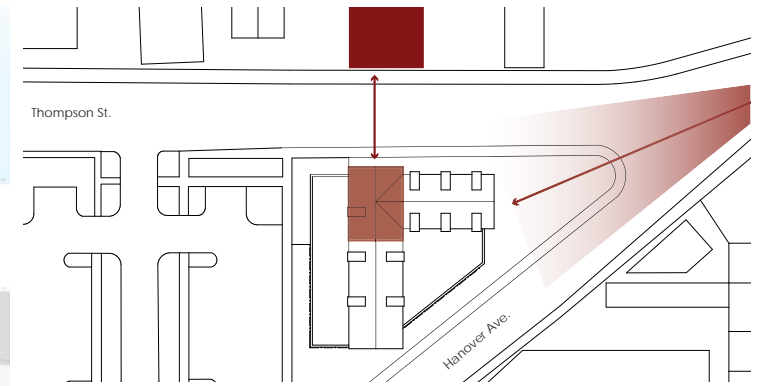
THOMPSON STREET VIEW



Roof shape references gable form of original town hall



INTERSECTION OF THOMPSON STREET & HANOVER AVENUE



Visual connection with former town hall (Herold Progress) & emphasis on view from Center St.



NORTH ELEVATION
SCALE : 1/8"=1'



ENTRANCE VIEW



Roof shape references gable form of original town hall



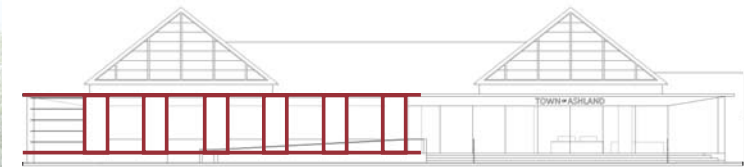
THOMPSON STREET VIEW



Horizontal emphasis references historic railroad architecture



EAST ELEVATION
SCALE : 1/8"=1'



Colonnade geometry references original brick facade